

From valuable to
indispensable

The Model Maturity Model Integration

(How to increase the value of your models)



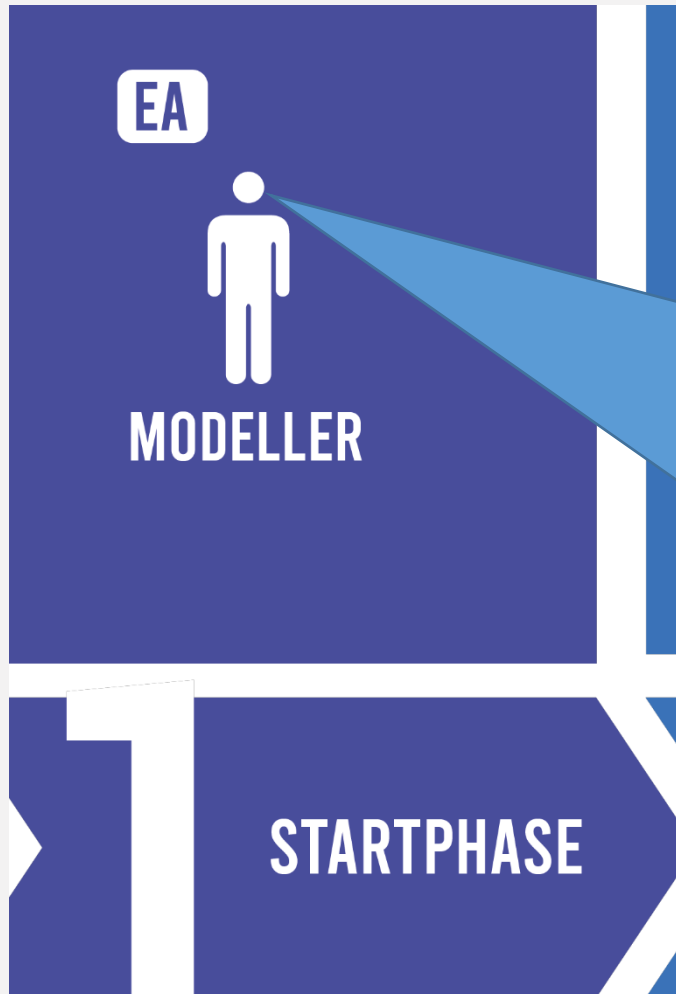
Peter Lieber

- CEO, Sparx Systems C. Europe
 - Focus on EA, ProCloud Server and Prolaborate
- CEO, Sparx Services C. Europe
 - Focus on EAM (www.sparxservices.eu) with Sparx Eco System
- President, Austrian Entrepreneurs' Association (www.gewerbeverein.at)
- Vice-President, Association of Austrian Software Innovations (www.voesi.or.at)
 - Head of Special Interest Group, Enterprise Architecture Management (EAM)



Peter Lieber

„Innovation needs models“



MMMI Level 1 | Startphase

Ideas: Easy to get, easy to install, easy to run

I use EA this way daily for any ideas, notes, thoughts but also for private stuff as wedding planning, funeral planning, household organization, ...

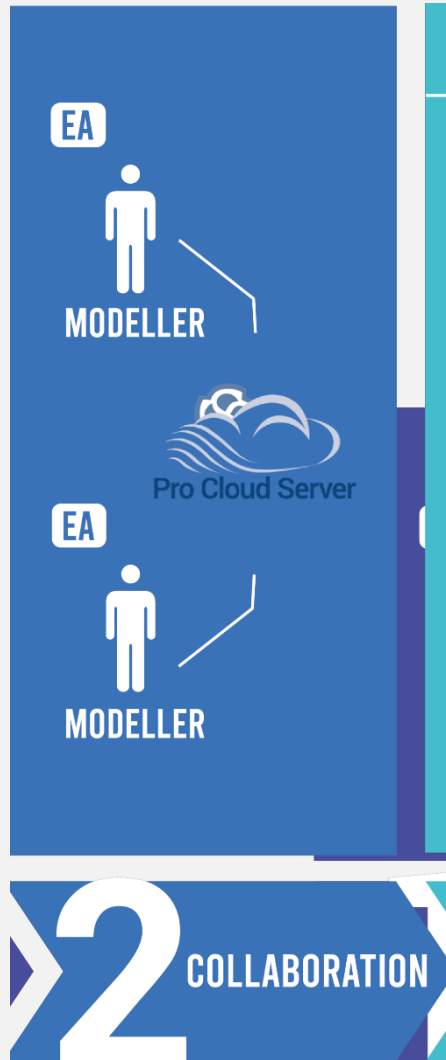
- Purchase a license of EA
- Install EA, Run EA
- Collaboration: Me, Myself and I
- Structure as you wish
- Use what you need and what
- Share your thoughts using documents, HTML generation, model sharing, ...

If your modelling work is helpful for your organization – maybe your colleagues are also interested in starting with modelling (with EA of course) and then...

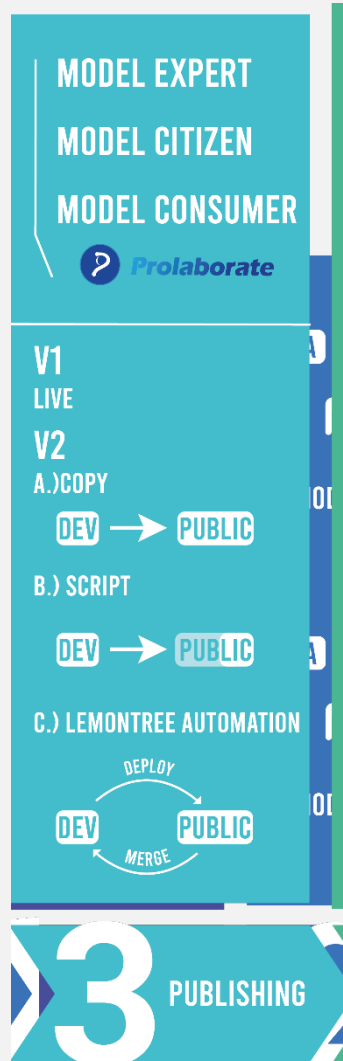
MMMI Level 2 | Collaboration

Ideas

- Central Database repository
- Use ProCloud Server
- Share Licenses using EA Floating
- Define a common structure (packages, diagrams, elements, ...)
- Identify possible collaboration challenges
 - Lock-Mechanism
 - Visibility Levels
- Activate EA security
- You can already start thinking about
 - Use Prolaborate with Live Access



If your modelling team is growing and you want to share also with people not aware of modelling but needs access, results, analysis or provide input - then...



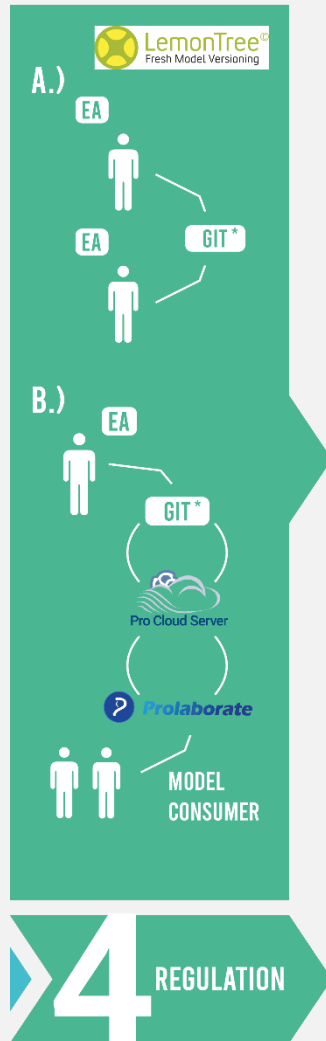
MMMI Level 3 | Publishing

Ideas

- More database repositories
 - DEV, TEST, PROD
 - Per Project, Per Solution, Per EAM, ...
 - Local, DBMS
- Deal with versions, variants
- Identify your own methodology (MDG, Validation rules, scripts, scriplets, assistants, ...)
- Implement a publishing process (Copy, Script, Automation, ...)
- Identify different Model roles (Expert, Citizen, Consumer)
- Use Prolaborate
 - To share and integrate the published model
 - To collaborate for model under development
- Use Automation to improve productivity and raise the value of your model work
- Reusable Asset Services or LemonTree Components

If your model work has regulator,
certification impact e.g. ISO26262
for automotive, DO178C for
aviation, ... - then...

* OTHER VERSION CONTROL SYSTEMS (VCS) SUPPORTED



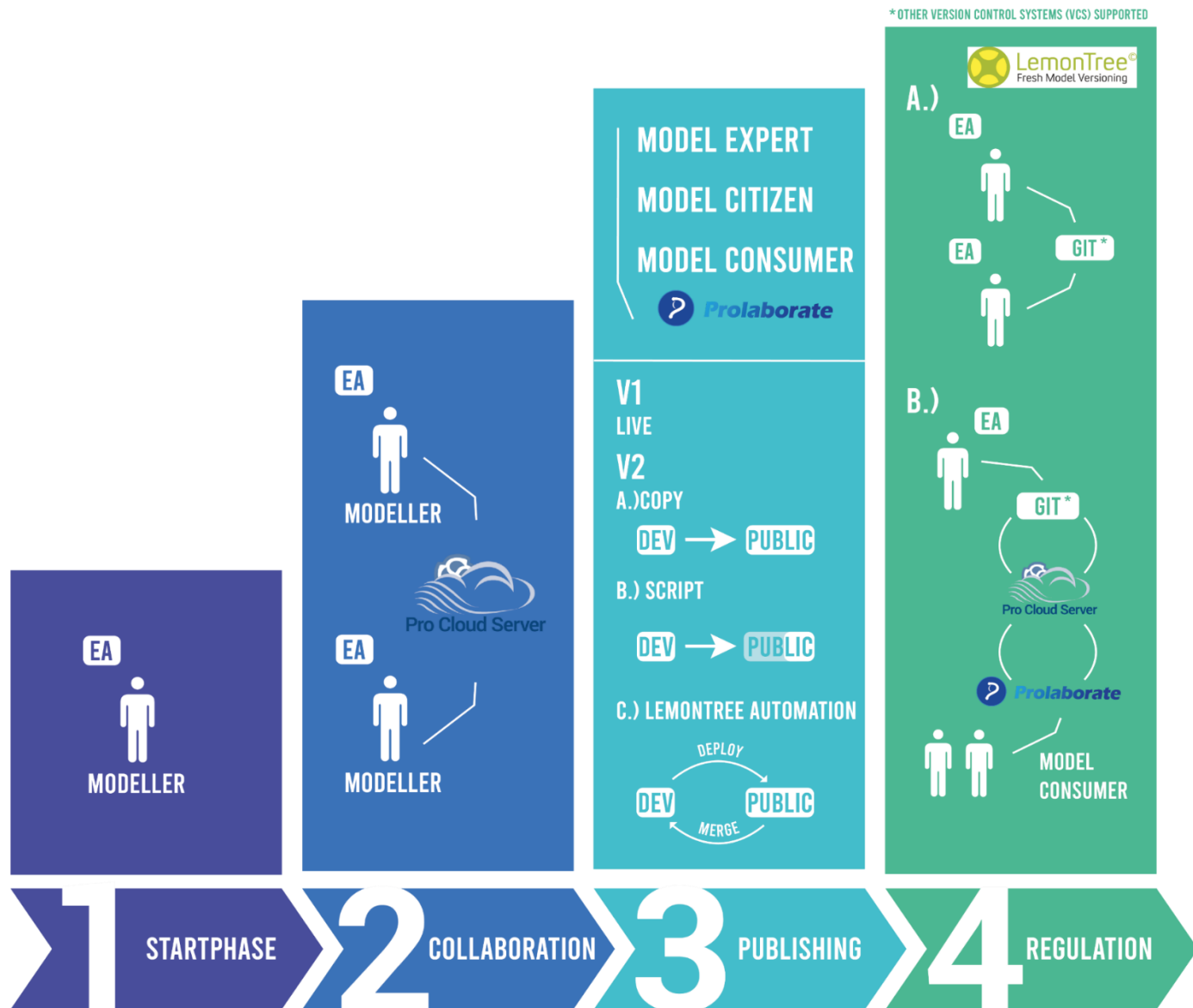
MMMI Level 4 | Regulation

Ideas

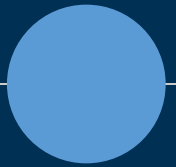
- You need to have a version controlled backend (e.g. very popular GIT)
- You need to have structured change management for the model itself
- You have to keep historic stages (versions) from your model for evidence (e.g. for a court process if a person was injured by the autonomous AI driven vehicle)



MMMI Level 5 | Optimizing



*OTHER VERSION CONTROL SYSTEMS (VCS) SUPPORTED



Q&A

peter.lieber@sparxsystems.eu